



AAC 100 SERIES

DESIGN BY HEE WELLING & HAY

HAY

AAC 100 SERIES

The AAC 100 series is a continuation of the long-term collaboration between HAY and designer Hee Welling. Whilst retaining the fundamental idea shared by the AAC family, the 100 series is actually very different to its predecessors.

AAC 100 was developed to accommodate the changing landscape of our work environment and to meet a growing need for greater comfort in the workspace, where there has been a visible shift from traditional desk seating to more welcoming and flexible seating solutions. Inspired by the ample, sculpted curves of the About a Lounge, the AAC 100 series features a high backrest and generous seat that combines inviting aesthetics with a high level of comfort.

The AAC 100 series comprises variants with different quilting types, upholstery options, and interchangeable base types, making it a versatile and functional collection suited to a wide variety of domestic, office, and public settings.





AAC 121 Soft, Linara 415, black base



AAC 121 Family



AAC 153, AAC 123, AAC 127, AAC 121

A minimalist interior scene featuring four modern armchairs. The chairs are arranged in a semi-circle on a light-colored floor. The background is a plain white wall with a white staircase railing visible in the upper right. The lighting is soft and even.

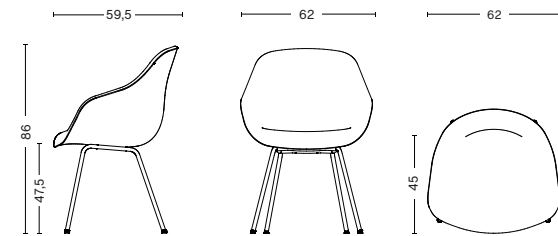
AAC 127

HAY



- AAC 127 CHAIR -

DIMENSIONS



W62 x D59,5 x H86 cm
Seat height 47,5 cm, Seat depth 45 cm

MATERIALS

SHELL / 10 mm injection moulded polypropylene with 10% glass fibre. Full upholstered.

FOAM / 20-50 mm moulded polyurethane foam.

BASE / 4 legged base in Ø18 mm bent steel tube.

With plastic trumpet gliders / felt trumpet gliders optional.

TEST / ANSI Bifma X5.1 UK

BASE



BLACK POWDER
COATED STEEL



CHROMED
STEEL

DELIVERY TIME

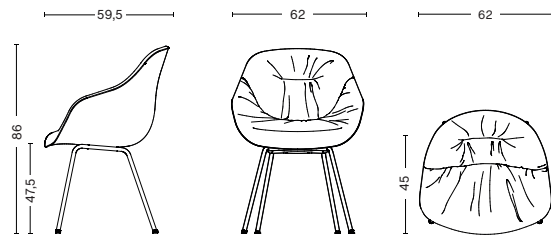
Approx. 6 weeks

FABRIC GROUPS

1 / Surface by HAY, Remix, Linara, Mode 2 / Steelcut, Steelcut Trio, Melange Nap, Lola, Olavi by HAY, Flamiber, Fairway 3 / Divina, Divina Melange, Divina MD, Fiord, Ruskin, Roden, Bolgheri, DOT 1682 4 / Hallingdal, Canvas, Lila, Harald, Compound 5 / Coda, Sierra, California, Balder 6 / Silk

- AAC 127 SOFT CHAIR -

DIMENSIONS



W62 x D59,5 x H86 cm
Seat height 47,5 cm, Seat depth 45 cm

MATERIALS

SHELL / 10 mm injection moulded polypropylene with 10% glass fibre. Full upholstered.

FOAM / 15 mm cut foam, 15 mm super soft cut foam and 40 mm wadding.

BASE / 4 legged base in Ø18 mm bent steel tube.

With plastic trumpet gliders / felt trumpet gliders optional.

TEST / ANSI Bifma X5.1 UK

BASE



BLACK POWDER
COATED STEEL



CHROMED
STEEL

DELIVERY TIME

Approx. 6 weeks

FABRIC GROUPS

1 / Surface by HAY, Remix, Linara, Mode 2 / Steelcut, Steelcut Trio, Melange Nap, Lola, Olavi by HAY, Flamiber, Fairway 3 / Divina, Divina Melange, Divina MD, Fiord, Ruskin, Roden, Bolgheri, DOT 1682 4 / Hallingdal, Canvas, Lila, Harald 5 / Coda, Sierra, California, Balder 6 / Silk

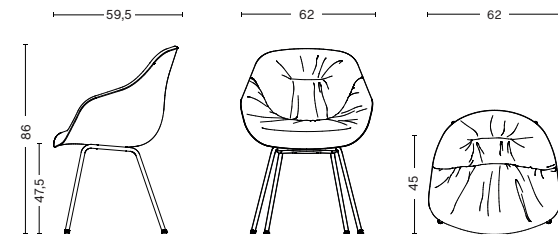




AAC 127 Soft Duo, front Olavi by HAY 16, back Black Silk SIL0842, black base
AAC 127 Soft Duo, front Remix 373, back Dark Brown-Silk SIL0329, black base

- AAC 127 SOFT DUO CHAIR -

DIMENSIONS



W62 x D59,5 x H86 cm
Seat height 47,5 cm, Seat depth 45 cm

MATERIALS

SHELL / 10 mm injection moulded polypropylene with 10% glass fibre. Full upholstered.

FOAM / 15 mm cut foam, 15 mm super soft cut foam and 40 mm wadding.

BASE / 4 legged base in Ø18 mm bent steel tube.

With plastic trumpet gliders / felt trumpet gliders optional.

TEST / ANSI Bifma X5.1 UK

BASE



BLACK POWDER
COATED STEEL



CHROMED
STEEL

DELIVERY TIME

Approx. 6 weeks



AAC 123

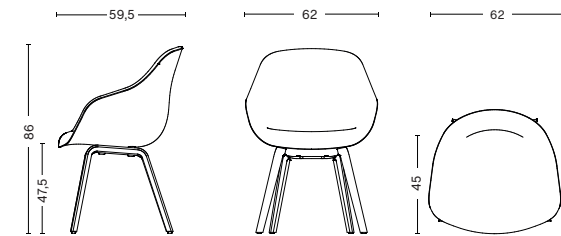
HAY



AAC 123, Bolgheri LGG60, matt lacquered oak base

- AAC 123 CHAIR -

DIMENSIONS



W62 x D59,5 x H86 cm
Seat height 47,5 cm, Seat depth 45 cm

MATERIALS

SHELL / 10 mm injection moulded polypropylene with 10% glass fibre. Full upholstered.

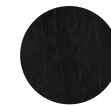
FOAM / 20-50 mm moulded polyurethane foam

BASE / Moulded plywood.

With standard gliders / felt gliders optional.

TEST / EN16139_L2 UK

BASE



BLACK STAINED
OAK



MATT LACQUERED
OAK



CLEAR LACQUERED
OAK



SOAPED
OAK

DELIVERY TIME

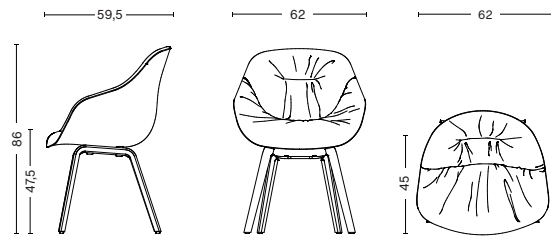
Approx. 6 weeks

FABRIC GROUPS

1 / Surface by HAY, Remix, Linara, Mode 2 / Steelcut, Steelcut Trio, Melange Nap, Lola, Olavi by HAY, Flamiber, Fairway 3 / Divina, Divina Melange, Divina MD, Fiord, Ruskin, Roden, Bolgheri, DOT 1682 4 / Hallingdal, Canvas, Lila, Harald, Compound 5 / Coda, Sierra, California, Balder 6 / Silk

- AAC 123 SOFT CHAIR -

DIMENSIONS



W62 x D59,5 x H86 cm
Seat height 47,5 cm, Seat depth 45 cm

MATERIALS

SHELL / 10 mm injection moulded polypropylene with 10% glass fibre. Full upholstered.

FOAM / 15 mm cut foam, 15 mm super soft cut foam and 40 mm wadding.

BASE / Moulded plywood.

With standard gliders / felt gliders optional.

TEST / EN16139_L2 UK

BASE



BLACK STAINED
OAK



MATT LACQUERED
OAK



CLEAR LACQUERED
OAK



SOAPED
OAK

DELIVERY TIME

Approx. 6 weeks

FABRIC GROUPS

1 / Surface by HAY, Remix, Linara, Mode 2 / Steelcut, Steelcut Trio, Melange Nap, Lola, Olavi by HAY, Flamiber, Fairway 3 / Divina, Divina Melange, Divina MD, Fiord, Ruskin, Roden, Bolgheri, DOT 1682 4 / Hallingdal, Canvas, Lila, Harald 5 / Coda, Sierra, California, Balder 6 / Silk

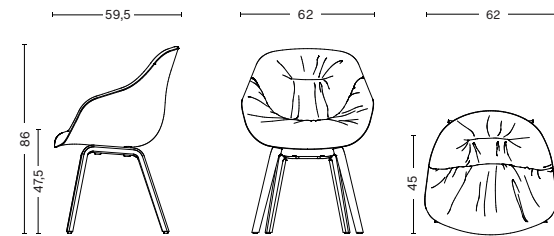


AAC 123 Soft, Hallingdal 407, matt lacquered oak base



- AAC 123 SOFT DUO CHAIR -

DIMENSIONS



W62 x D59,5 x H86 cm
Seat height 47,5 cm, Seat depth 45 cm

MATERIALS

SHELL / 10 mm injection moulded polypropylene with 10% glass fibre. Full upholstered.

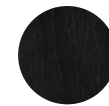
FOAM / 15 mm cut foam, 15 mm super soft cut foam and 40 mm wadding.

BASE / Moulded plywood.

With standard gliders / felt gliders optional.

TEST / EN16139_L2 UK

BASE



BLACK STAINED
OAK



MATT LACQUERED
OAK



CLEAR LACQUERED
OAK



SOAPED
OAK

DELIVERY TIME

Approx. 6 weeks

The image shows three AAC 121 chairs in a modern interior. One chair is in the foreground on the left, upholstered in light beige fabric with a brown leather-like base and a chrome tripod base. In the center, a grey upholstered chair with a black tripod base is the focal point. To the right, a pink upholstered chair with a black tripod base is partially visible. The background features a wall of large, light-colored marble tiles and a large window. A white cylindrical pillar is in the foreground on the right. The floor is a light-colored, polished material.

AAC 121

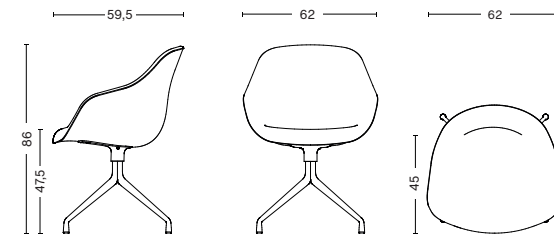
HAY



AAC 121, Flamiber Grey C8, black base

- AAC 121 CHAIR -

DIMENSIONS



W62 x D59,5 x H86 cm

Seat height 47,5 cm, Seat depth 45 cm

MATERIALS

SHELL / 10 mm injection moulded polypropylene with 10% glass fibre. Full upholstered.

FOAM / 20-50 mm moulded polyurethane foam.

BASE / 4 star swivel base in cast aluminium.

With standard gliders / felt gliders optional.

TEST / EN16139_L2 UK

BASE



BLACK POWDER
COATED
ALUMINIUM



POLISHED
ALUMINIUM

DELIVERY TIME

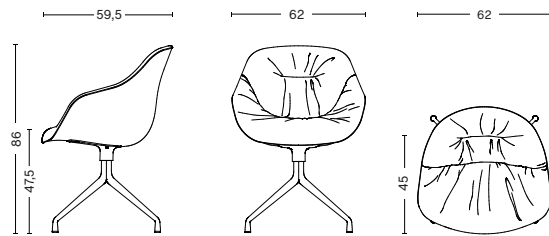
Approx. 6 weeks

FABRIC GROUPS

1 / Surface by HAY, Remix, Linara, Mode 2 / Steelcut, Steelcut Trio, Melange Nap, Lola, Olavi by HAY, Flamiber, Fairway 3 / Divina, Divina Melange, Divina MD, Fiord, Ruskin, Roden, Bolgheri, DOT 1682 4 / Hallingdal, Canvas, Lila, Harald, Compound 5 / Coda, Sierra, California, Balder 6 / Silk

- AAC 121 SOFT CHAIR -

DIMENSIONS



W62 x D59,5 x H86 cm
Seat height 47,5 cm, Seat depth 45 cm

MATERIALS

SHELL / 10 mm injection moulded polypropylene with 10% glass fibre. Full upholstered.

FOAM / 15 mm cut foam, 15 mm super soft cut foam and 40 mm wadding.

BASE / 4 star swivel base in cast aluminium.

With standard gliders / felt gliders optional.

TEST / EN16139_L2 UK

BASE



BLACK POWDER
COATED
ALUMINIUM



POLISHED
ALUMINIUM

DELIVERY TIME

Approx. 6 weeks

FABRIC GROUPS

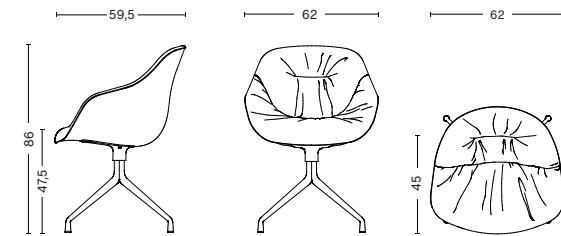
1 / Surface by HAY, Remix, Linara, Mode 2 / Steelcut, Steelcut Trio, Melange Nap, Lola, Olavi by HAY, Flamiber, Fairway 3 / Divina, Divina Melange, Divina MD, Fiord, Ruskin, Roden, Bolgheri, DOT 1682 4 / Hallingdal, Canvas, Lila, Harald 5 / Coda, Sierra, California, Balder 6 / Silk





- AAC 121 SOFT DUO CHAIR -

DIMENSIONS



W62 x D59,5 x H86 cm

Seat height 47,5 cm, Seat depth 45 cm

MATERIALS

SHELL / 10 mm injection moulded polypropylene with 10% glass fibre. Full upholstered.

FOAM / 15 mm cut foam, 15 mm super soft cut foam and 40 mm wadding.

BASE / 4 star swivel base in cast aluminium.

With standard gliders / felt gliders optional.

TEST / EN16139_L2 UK

BASE



BLACK POWDER
COATED
ALUMINIUM



POLISHED
ALUMINIUM

DELIVERY TIME

Approx. 6 weeks

The image shows three modern office chairs in a minimalist room. The room features a light-colored wooden floor, a white cylindrical pillar, and a wall with large, grey marble tiles. The chairs are arranged in a semi-circle. The chair in the center is a dark brown leather chair with a high, curved backrest and a black five-star base with casters. The chair on the left is a black leather chair with a similar design. The chair on the right is a dark brown fabric chair with a high, curved backrest and a black five-star base with casters. The text 'AAC 153' is overlaid in the center of the image.

AAC 153

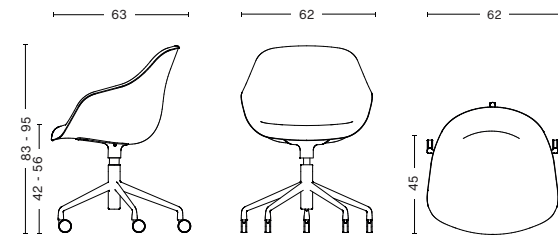
HAY



AAC 153, Black Silk SIL0842, black base

- AAC 153 CHAIR -

DIMENSIONS



W62 x D63 x H83-95 cm
Seat height 42-56 cm, Seat depth 45 cm

MATERIALS

SHELL / 10 mm injection moulded polypropylene with 10% glass fibre. Full upholstered.

FOAM / 20-50 mm moulded polyurethane foam.

BASE / 5 star swivel base in cast aluminium with soft wheels and gaslift.

TEST / Will be tested

BASE



BLACK POWDER
COATED
ALUMINIUM



POLISHED
ALUMINIUM

DELIVERY TIME

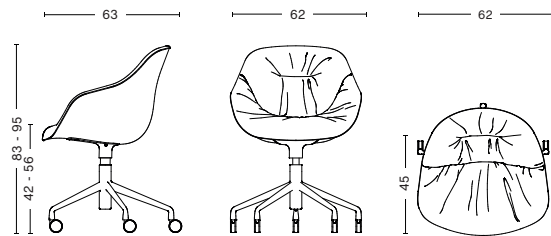
Approx. 6 weeks

FABRIC GROUPS

1 / Surface by HAY, Remix, Linara, Mode 2 / Steelcut, Steelcut Trio, Melange Nap, Lola, Olavi by HAY, Flamiber, Fairway 3 / Divina, Divina Melange, Divina MD, Fiord, Ruskin, Roden, Bolgheri, DOT 1682 4 / Hallingdal, Canvas, Lila, Harald, Compound 5 / Coda, Sierra, California, Balder 6 / Silk

- AAC 153 SOFT CHAIR -

DIMENSIONS



W62 x D63 x H83-95 cm
Seat height 42-56 cm, Seat depth 45 cm

MATERIALS

SHELL / 10 mm injection moulded polypropylene with 10% glass fibre. Full upholstered.

FOAM / 15 mm cut foam, 15 mm super soft cut foam and 40 mm wadding.

BASE / 5 star swivel base in cast aluminium with soft wheels and gaslift.

TEST / Will be tested

BASE



BLACK POWDER
COATED
ALUMINIUM



POLISHED
ALUMINIUM

DELIVERY TIME

Approx. 6 weeks

FABRIC GROUPS

1 / Surface by HAY, Remix, Linara, Mode 2 / Steelcut, Steelcut Trio, Melange Nap, Lola, Olavi by HAY, Flamiber, Fairway 3 / Divina, Divina Melange, Divina MD, Fiord, Ruskin, Roden, Bolgheri, DOT 1682 4 / Hallingdal, Canvas, Lila, Harald 5 / Coda, Sierra, California, Balder 6 / Silk

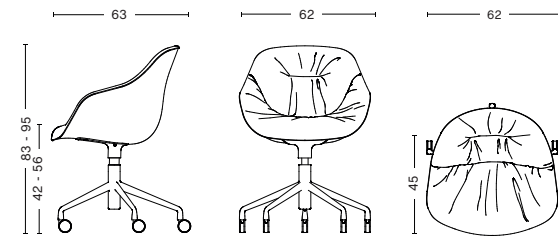


AAC 153 Soft, Grey Silk SIL0855, black base



- AAC 153 SOFT DUO CHAIR -

DIMENSIONS



W62 x D63 x H83-95 cm
Seat height 42-56 cm, Seat depth 45 cm

MATERIALS

SHELL / 10 mm injection moulded polypropylene with 10% glass fibre. Full upholstered.

FOAM / 15 mm cut foam, 15 mm super soft cut foam and 40 mm wadding.

BASE / 5 star swivel base in cast aluminium with soft wheels and gaslift.

TEST / Will be tested

BASE



BLACK POWDER
COATED
ALUMINIUM



POLISHED
ALUMINIUM

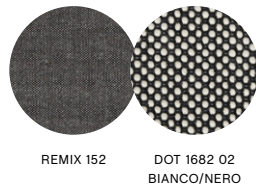
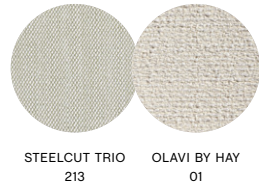
DELIVERY TIME

Approx. 6 weeks

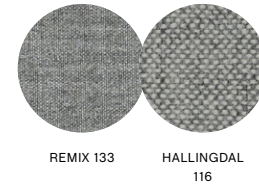
- FABRIC & LEATHER COMBINATIONS -

Please note that AAC 100 Soft Duo is available in selected textile combinations.

BACK / FRONT



BACK / FRONT



- AAC 100 -

Please use below link to download
images of the AAC 100 series.

[Imagebank](#)

Please use below link for order
placement and further information.

HAYb2b.com

HAY

www.hay.com



AAC 121 Soft Duo, front Steelcut Trio 226, back Chestnut Silk SIL0229, alu base