

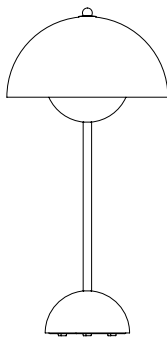


FLOWERPOT TABLE LAMP ^{VP3}

BY VERNER PANTON
1969

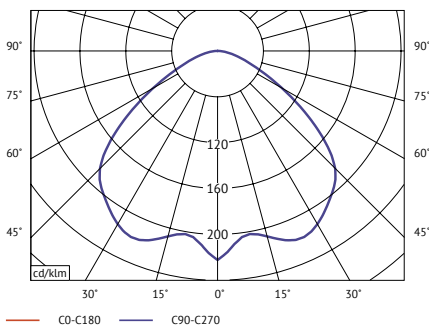
FLOWERPOT TABLE LAMP VP3

BY VERNER PANTON
1969



H: 49CM / 19.3in

Ø: 23CM / 9.1IN



Photometric data file (LDT or IES) available upon request.

Amongst the prolific works of Verner Pantan, one of Denmark's most playful and provocative talents, the FlowerPot lamp stands out as a cultural emblem that captured the hearts and minds of an entire era. First launched in '68, the FlowerPot lamp became synonymous with the peace and love movement led by a generation in search of a more open, progressive mindset. Add to that a fascination with the future prompted by the race to outer space and you have the ideal framework for a visionary designer like Pantan, who was relentless in his own quest to challenge the status quo.

Captivated by fluid forms and a vast spectrum of vivid colours, Pantan designed this lamp to be more than a source of illumination. He went on to create entire interiors filled with furniture, saturated with psychedelic colours and accentuated with lamps appearing in repeated patterns as decorative details. From futuristic furniture fairs to exhibition spaces to museums of contemporary design, galleries and private collections, the FlowerPots continue to signify a singular formula for beauty and simplicity.

"Without a doubt, Pantan is one of the most daring designers of the 20th century," says &tradition Brand Manager Martin Kornbek Hansen. "What makes the FlowerPot lamp so iconic is that while it's reminiscent of the past, its global appeal truly transcends time. By introducing a new colour scheme, we catapult the lamp into a contemporary landscape, appealing to new audiences who see design as an imperative that adds an extra dimension to their lives."

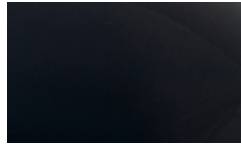
Pantan himself summed it up when he said "The main purpose of my work is to provoke people into using their imagination and to make their surroundings more exciting." We couldn't agree more.

Product type	Table Lamp.
Production Process	The two shades are made from deep drawn metal.
Environment	Indoor.
Dimensions (cm / in)	Ø: 23cm/9.1in, H: 50cm/19.7in.
Weight (kg)	4.50 kg.
Materials	Lacquered metal with 2 meter clear PVC cord.
Colours	Black blue, Deep red, Grey beige, Dark green, White, Polished brass, Polished Stainless steel, Matt light grey.
Voltage (V)	220-240V - 50Hz.
Light Source & Energi efficiency class	E27 Max 40 Watt. The luminaire is compatible with bulbs of the energy classes: A++ - E. Bulb is not included.
Certifications	CE, IP20, Class II.
Cord lenght / diameter (cm / in)	200cm/78.7in.
Cleaning Instructions	Clean with soft dry cloth. Always switch off the electricity supply before cleaning.
Package Dimensions (cm / in)	H: 55.0cm/21.7in x W: 27.0cm/10.6in x D: 27.0cm/10.6in..

PRODUCT

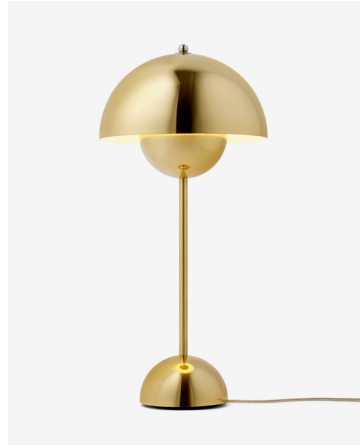


COLOR



Black blue

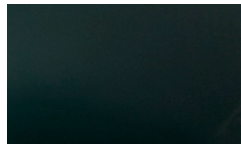
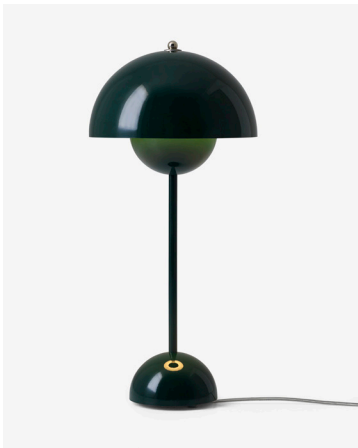
PRODUCT



COLOR



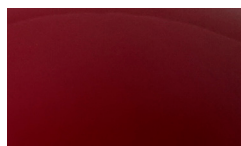
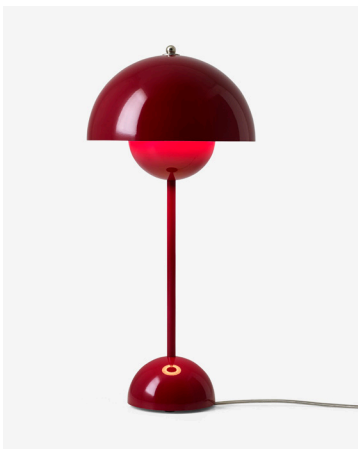
Polished brass



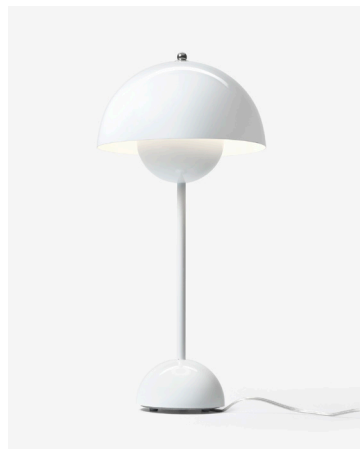
Dark green



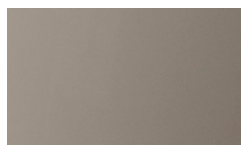
Polished Stainless steel



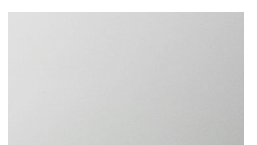
Deep red



White



Grey beige



Matt light grey